

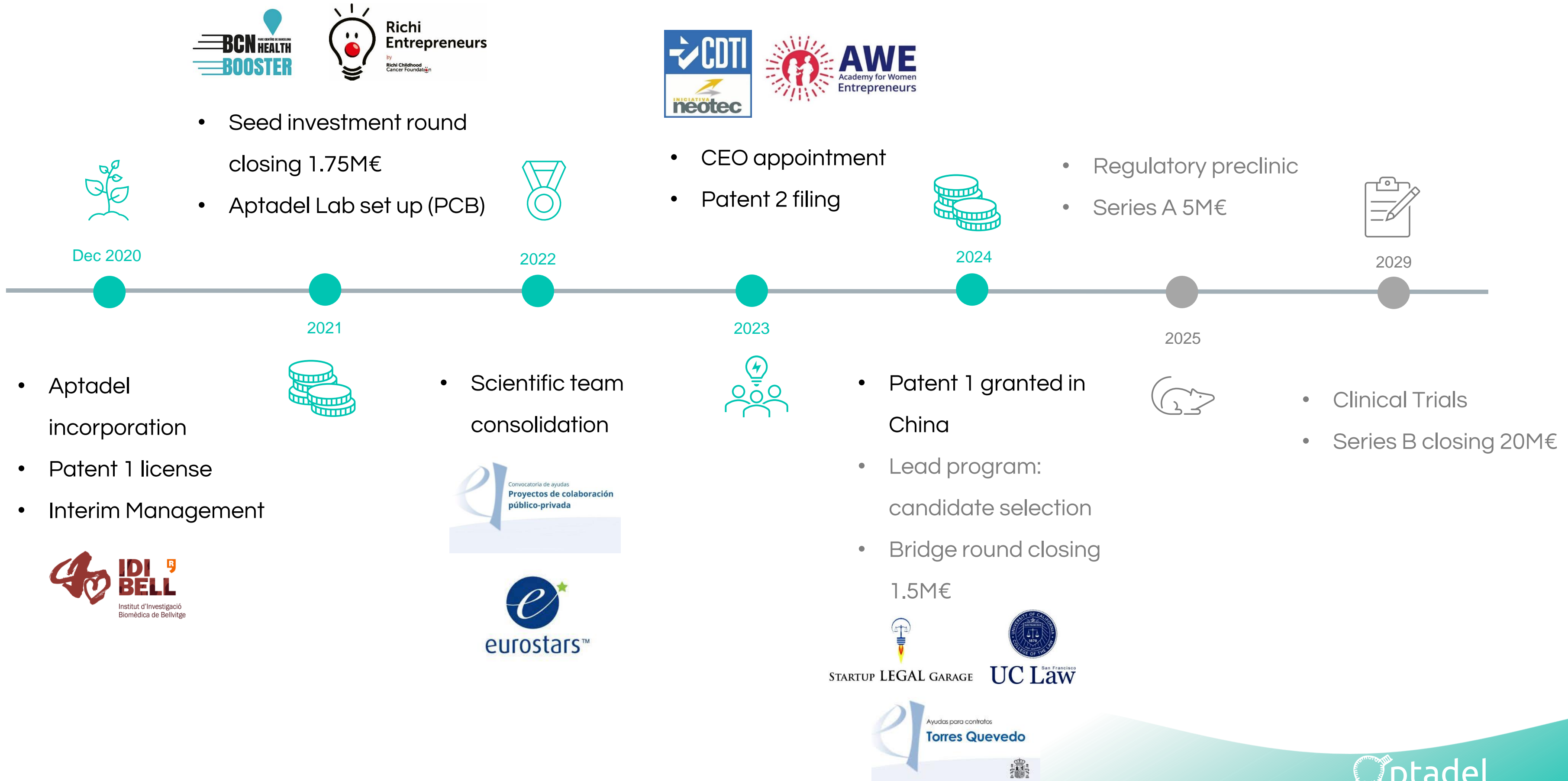
Developing RNA-based therapies for the treatment of childhood cancer

October 2024

FORO FIDBAN



Roadmap



PROBLEM: Lack of therapies developed specifically for children



PROBLEM: Lack of therapies developed specifically for children

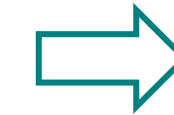


Childhood cancer is rare but remains the **leading cause of death by disease** for children under 15.

More than 70% of these children will have **chronic health problems**



1st



Repurposed

Only 12 new treatments specifically developed for paediatric cancer have been approved by the FDA in the last 25 years (vs >200 for adults)

PROBLEM: Cancer therapeutics are unspecific and highly toxic



- The primary cause of cancer death is metastatic disease
- Metastasis management is performed by chemotherapeutics that kills both cancer cells and healthy cells

TRADITIONAL APPROACH

Chemotherapy

Radiation therapy

- Poor efficacy
- Non-specific
- Serious side-effects
- Low quality of life

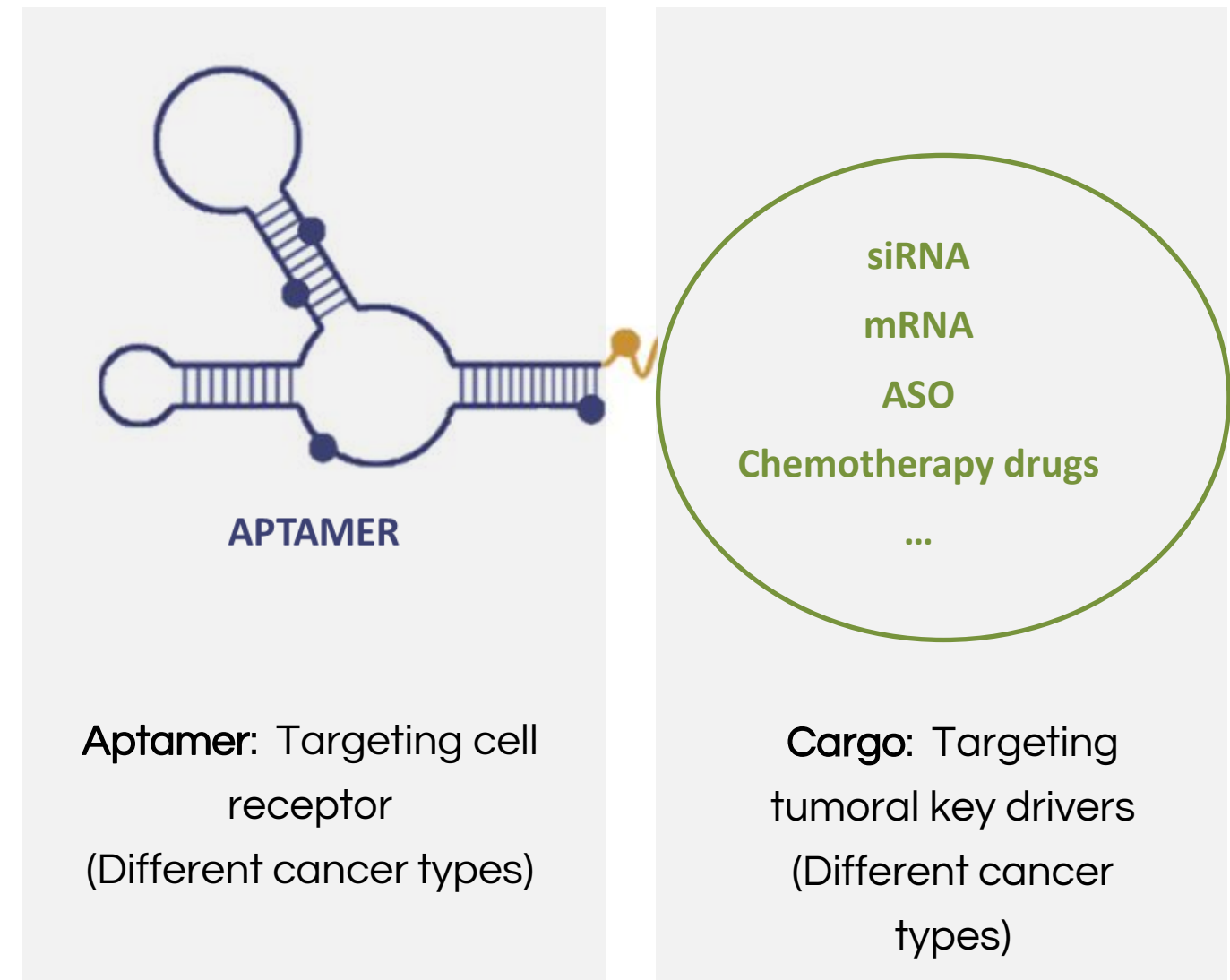
What if cancer cells can be effectively killed while leaving healthy cells unharmed?

FUTURE OF CANCER TREATMENT: TARGETED THERAPIES



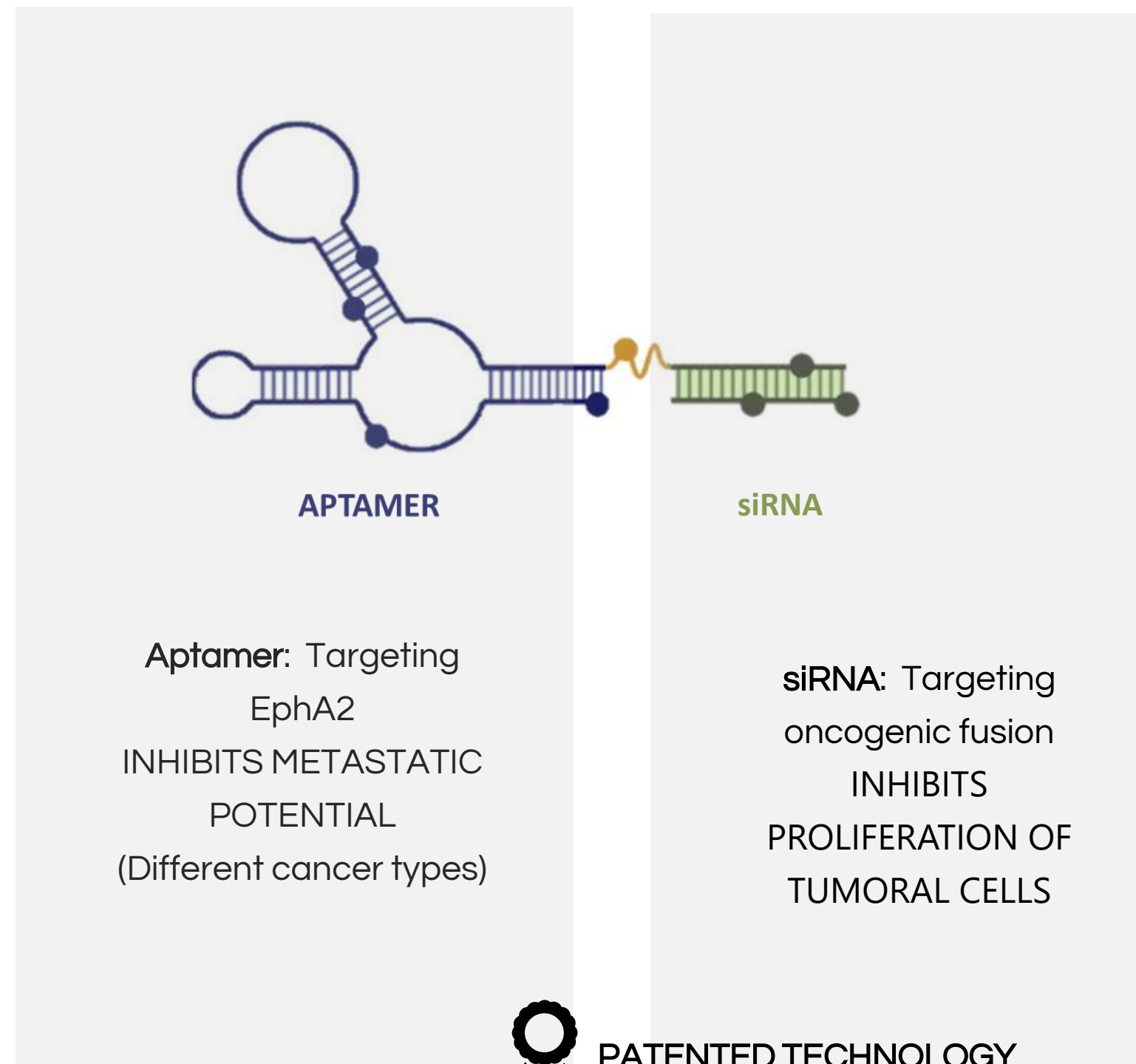
APTAMERS AS THERAPEUTIC AGENTS

- Aptamers are oligonucleotides capable of binding to specific targets with **high affinity and specificity** and can be conjugated to different **drugs for therapeutic delivery**.
- They possess **intrinsic properties** that bring **advantages in clinical applicability and drug manufacturing**.

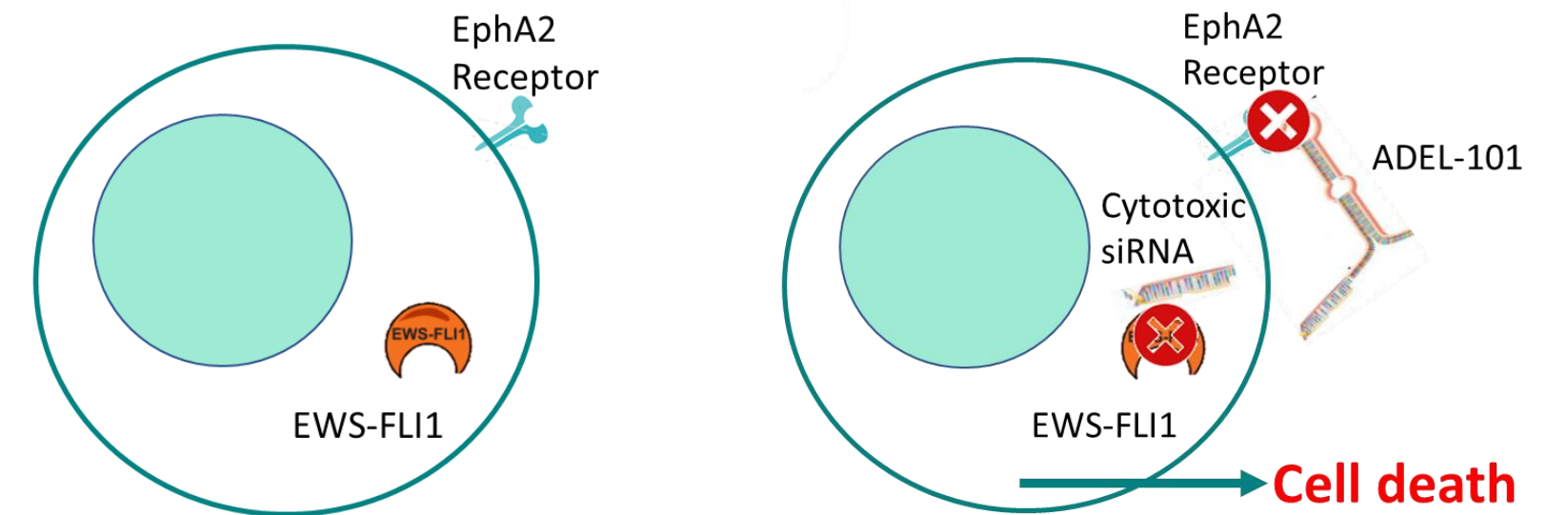


PLATFORM VALIDATION: Ewing Sarcoma and Rhabdomyosarcoma (childhood cancers)

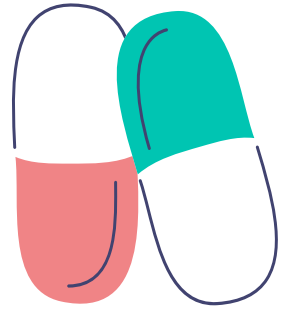
APTADEL has developed a novel RNA aptamer targeting EphA2 cell receptor (overexpressed in cancer cells) as a selective delivery tool to treat cancer



MoA



SCIENTIFIC RESULTS



Highly stable

SCIENTIFIC RESULTS



Highly stable

Non toxic

SCIENTIFIC RESULTS

Highly stable

Non toxic

3x less metastasis



SCIENTIFIC RESULTS

Highly stable

Non toxic

3x less metastasis

30% less tomour growth



SCIENTIFIC RESULTS

Highly stable

Non toxic

3x less metastasis

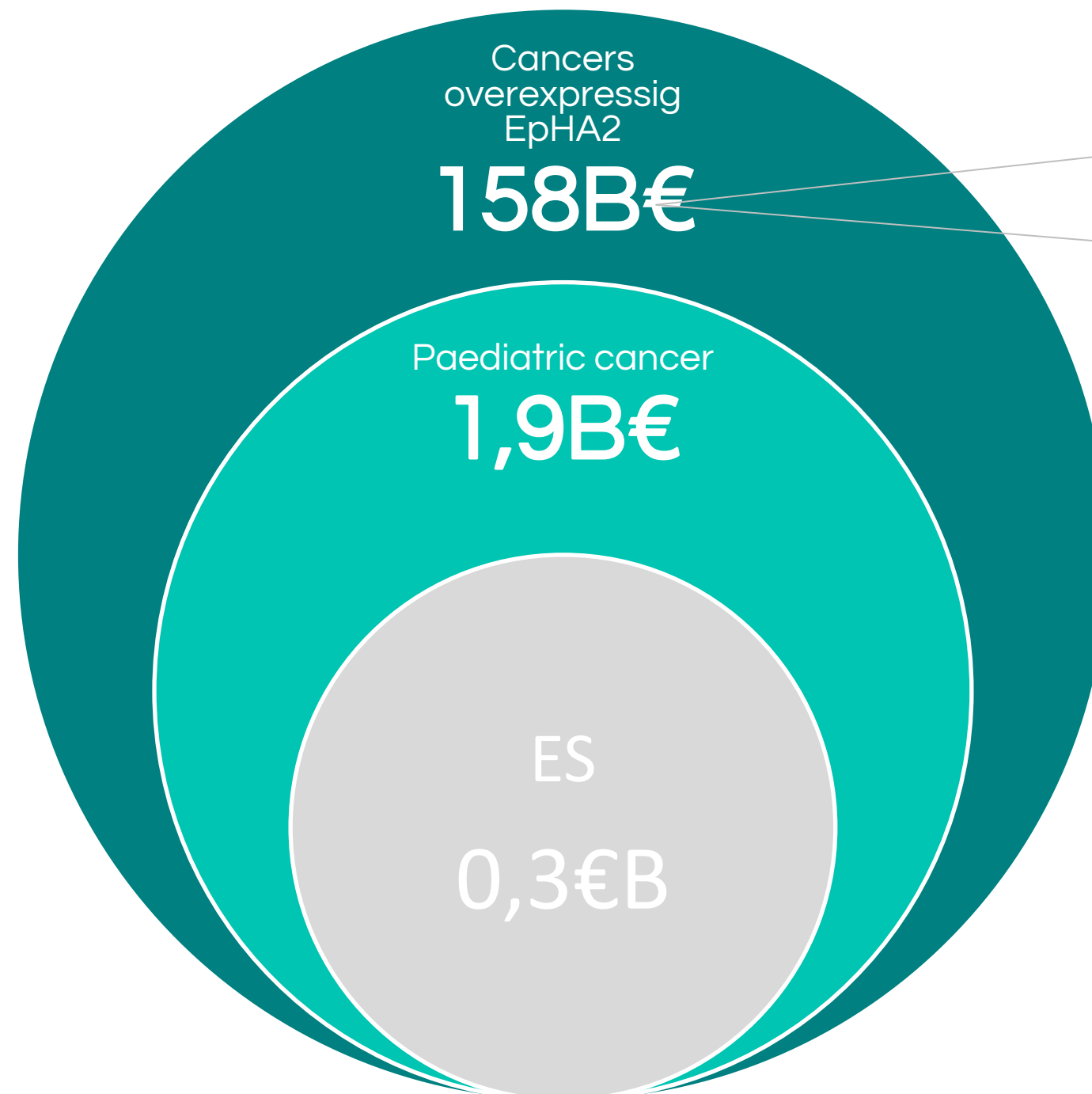
30% less tomour growth

Highly specific



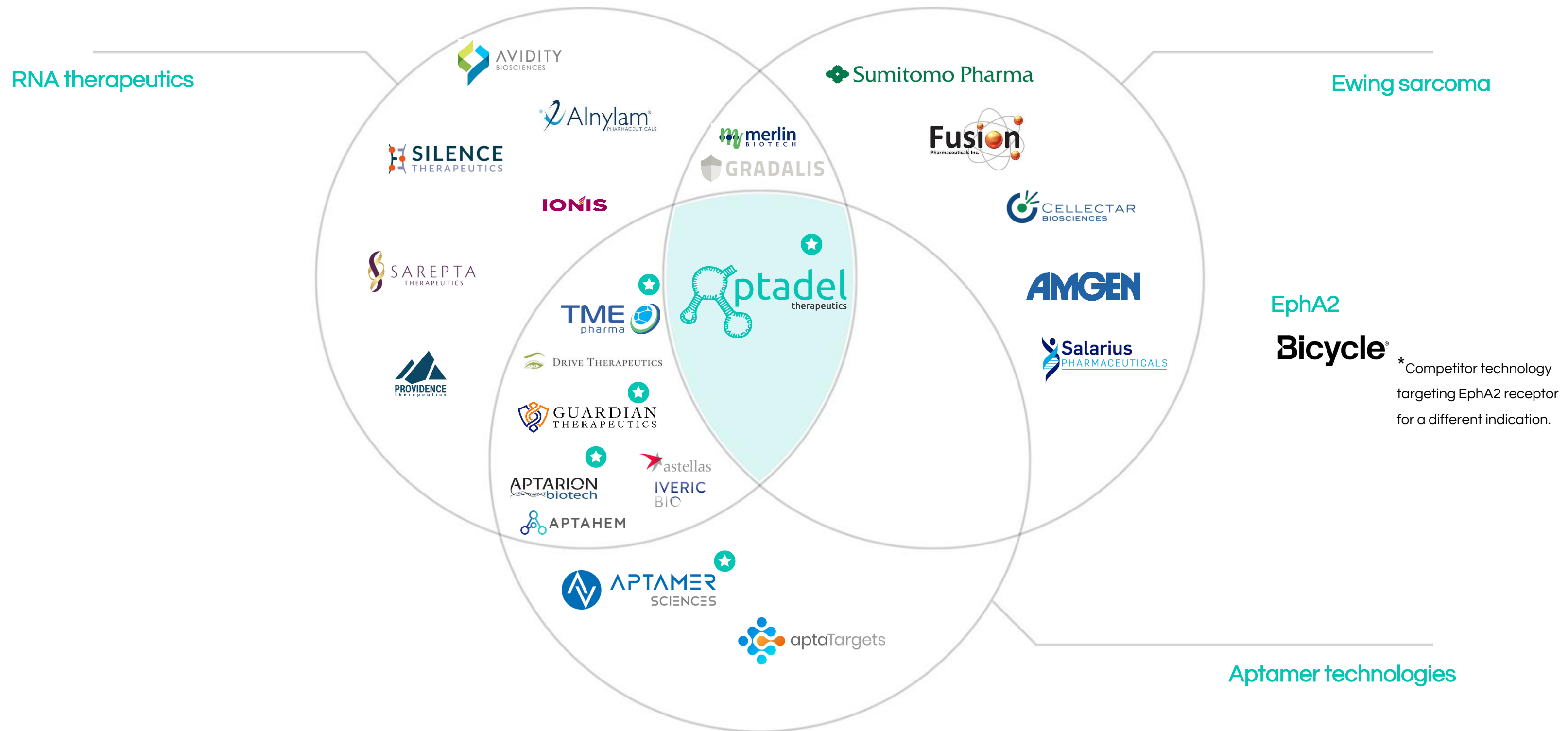
MARKET OPPORTUNITY

The potential of Aptadel's platform for generating **new personalized candidates** for different types of cancer is very high, with a significant impact on the metastatic processes of all solid tumors related to EphA2 and **numerous \$B oportunities**



- Prostate
- Breast
- Colorectal
- Cervical
- Melanoma
- Pancreatic
- Bladder
- Bone Sarcoma
- Glioblastoma
- Ovarian
- Esophageal
- Rhabdomyosarcoma
- Ewing Sarcoma

UNIQUE COMPETITIVE POSITION

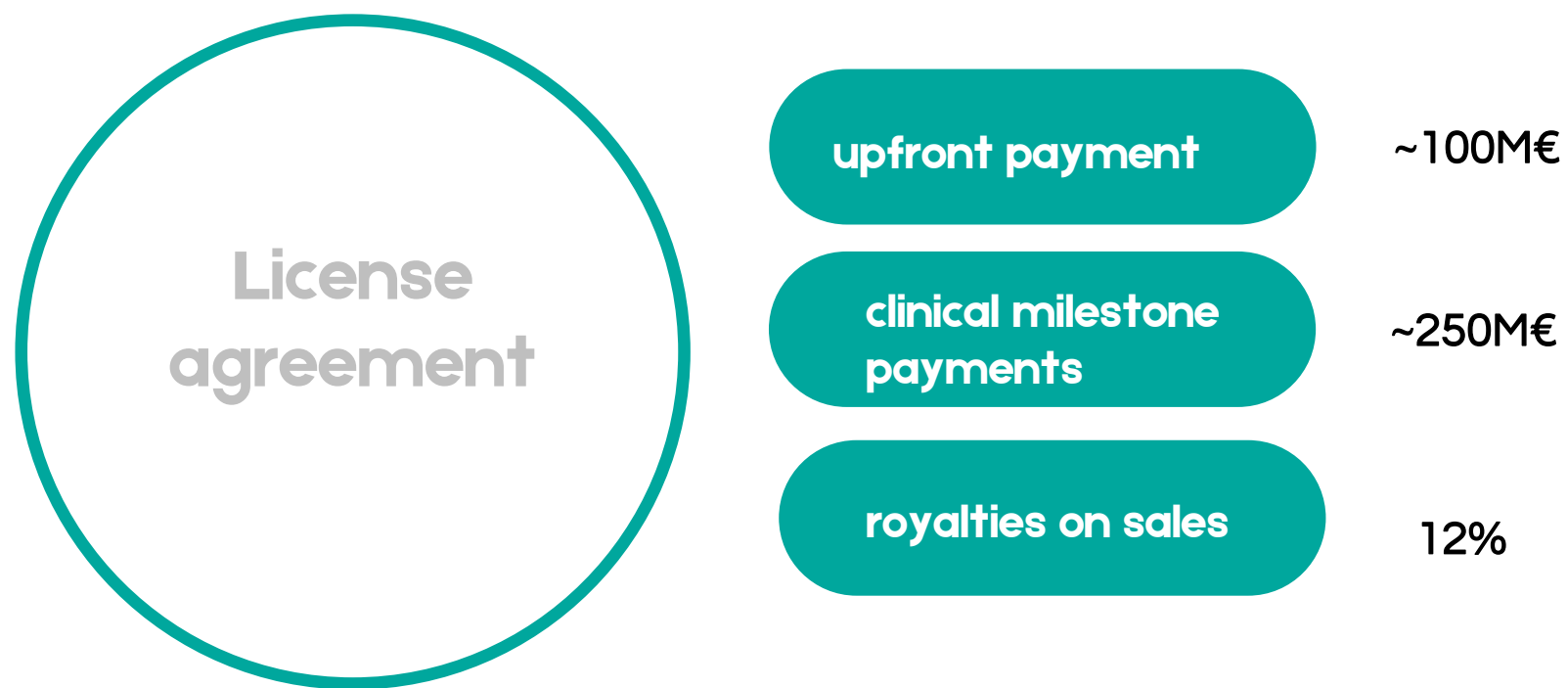


★ Aptamers targeting oncological indications

CONFIDENTIAL

BUSINESS MODEL

The business model pursued by Aptadel Therapeutics consists of the **preclinical and clinical development of ADEL-101** up to clinical Phase IIa, followed by **licensing** the solution to a large **pharmaceutical company** that will make additional investments to bring the product to market.



FEATURED M&A IN THE RNA LANDSCAPE

Astellas acquired Iveric Bio (**\$5.9B**) FDA-approved aptamer 2023

AstraZeneca development and commercialization deal with Ionis (**\$200M** upfront payment)

Alnylam acquired Sirna Therapeutics (**\$175M** upfront payment)

COMPANIES EXPLOITING RNA THERAPEUTICS



APTADEL'S PIPELINE STATUS



JOIN OUR JOURNEY

We are raising **1.5M€** to initiate the **preclinical regulatory** stage of Aptadel's **childhood** program and accelerate our **expansion** plans to the **adult** market, validating our RNA platform.

COMMITTED

0.3 M€ current investors
0.5 M€ NEW INVESTORS

COMPETITIVE FUNDING

> 2 M€ submitted (2024)

USE OF FUNDS

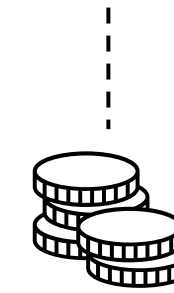


70% R&D

20% PERSONNEL

10% G&A

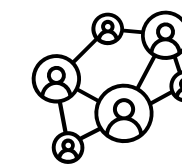
MILESTONES



Business
Incorporate specialized investors to further close a 5M€ investment in 2025 to complete preclinical phase.



R+D
Finish in vivo PoC and initiate the regulatory preclinical phase. Advance on the adult indication.



Talent
Incorporate key talent for the next development phase.

APTADEL'S TEAM IS COMMITTED TO FIGHT CHILDHOOD CANCER



Gisela Lorente

CEO

Extensive international experience in tech transfer and innovation with proven track record of portfolio management, IPR negotiation, technology licensing agreements with the pharmaceutical industry, creation of spin-offs, and negotiations with investors.



Nadia Pons

COO

Innovation expert with >10 years of experience managing cutting-edge innovation projects. Specialized in new business development in cross-cultural environments. Solid competence in generating strategic alliances and project management. Previous experience leading operations in oncology start-ups.



Oscar Martinez

Academic Founder

Principal investigator at IDIBELL with >25 years experience in biomedical research and childhood sarcomas. KOL in Ewing sarcoma. Experience in clinical trial design, having participated in two Phase I and one Phase II clinical trials. PhD Biochemistry, Autonomous University of Barcelona.



Adrian Torres

Head of R+D



Jazmine Arevalo

Senior Scientist & PM



Laura Barbera

Lab Technician



Paloma Giangrande PhD

**KOL RNA aptamers
drug development**



Jaume Reventós PhD, MD

Translational medicine - BOD



Juan Martin Liberal MD

Medical oncology (sarcoma)



Lluís Valenciano

CFO



Silvia Bertran

IPR Management



Judy Carmody PhD

CMC Management

Thank you

GISELA LORENTE

Chief Executive Officer

www.aptadeltx.com



glorente@aptadeltx.com



Parc Científic de Barcelona (Spain)

